



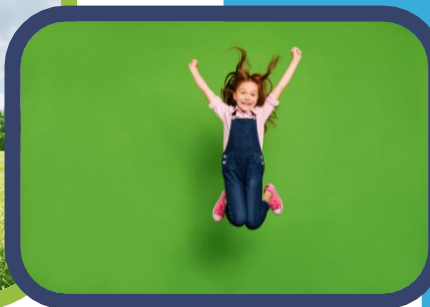
VACATION CARE PROGRAM



Address Kingfisher Dr, Hewett SA 5118

Director Kiara Rawlinson

Educators Bec Yelland, Brianna Hartwell, Cam Fletcher,
Werner Karsten, William Yates, Melissa
Richardson, Tayla Yon



www.happyhaven.sa.edu.au

hewett@happyhaven.sa.edu.au

SITE: 0416 616 408

HEAD OFFICE: 8155 5444



Our Program

The Happy Haven OSHC Vacation Care program provides a warm, caring, fun, stimulating and interesting environment, full of exciting activities and excursions for your children to enjoy during their school holidays. Please ensure you read all the information provided on the program & the consent forms to help you and your children have a trouble free, fun, and successful holidays.

Please contact us for any further information. Extra copies of the program are available online.

Warm Regards,

Kiara Rawlinson, Hannah Kavanagh & Nicholas Smith

Cancellation Policy

Notification of cancellations for **any** vacation care days, **must be made two weeks prior to the day that has been booked**. Cancellations after this date will incur a full fee. This amount will be less your CCS and recorded as an absent day. *Note:* Children are approved up to 42 absence days per financial year, once used full fees will apply.

Opening Hours

We are open 6:30am-6:00pm. We implement a late pick-up fee policy, which is \$25.00 per family for the first 15mins late and \$60.00 thereafter. Please phone and let us know if you are going to be late.

Fees

1. **\$54:00 per child per day**
2. Childcare Subsidy (CCS) is income and means tested, please contact Family Assistance Office (FAO) on Ph: 136 150 to be assessed.
3. Payment of fees is by Direct Debit and this is processed a week in arrears.

General Information

- Please encourage your child to read and prepare for Vacation Care days so they are well prepared for the activities.
- Please send your child with a **packed recess, lunch & water bottle**. Children are usually very active during the holidays and may also require extra fuel to keep them going. Please do not send your children with lunches that need to be heated or cooked, we cannot heat or cook any food due to WH&S restrictions.
- Please label all personal items so that they can be easily identified.
- We will provide breakfast (before 8:00am) and **fruit and vegetable platters daily** (this is not a substitute to lunch). If an alternate snack is provided, it will be listed at the service daily.

Excursions

- Excursion times are approximate – please ensure all children are at OSHC by the scheduled departure time or risk missing the excursion. Buses cannot wait for children who arrive after the time listed.
- Children are not permitted spending money for excursions. *Exceptions will be listed on program.*
- Please send a hat, suitable clothes (SunSmart) and shoes (sneakers), lunch and water bottle for all excursions. Thongs, sandals etc. are not recommended for play. If a child arrives without a hat on an excursion day, one will be charged to your account, and your child will be provided a hat with their name written in it to keep for future excursions.
- For many of our excursions, we join together with children from other Happy Haven run sites.
- We adhere to educator: child ratios, as determined by an individual risk assessment conducted for each excursion. These are available on the site iPad, in the parent area.

HEWETT VACATION CARE - JULY 2021



www.happyhaven.sa.edu.au/hewett








hewett@happyhaven.sa.edu.au



0416 616 408

MONDAY 5 th July	TUESDAY 6 th July	WEDNESDAY 7 th July	THURSDAY 8 th July	FRIDAY 9 th July
EXCURSION Inflatable World	WINTER WONDERLAND	EXCURSION National Motor Museum	INCURSION CUBE Sports	NAIDOC CELEBRATIONS
<p>Arrive By: 11:00am Return: 4:00pm</p> <p>Home to the biggest indoor inflatable playground in Australia. We will be heading to Inflatable World in Salisbury for a private 2-hour Happy Haven session. Please ensure you wear comfy clothes, bring along a pair of socks and a drink bottle as you are sure to work up a sweat.</p>  <p>OUTCOME: 1, 3</p>	<p>Today we will create a winter wonderland at OSHC. You can create some snowflakes or snowmen, make a snow globe, bake snowman cookies, or even make snow dough.</p>  <p>OUTCOME: 1, 5</p>	<p>Arrive By: 9:00am Return: 4:00pm</p> <p>Discover the history of motor vehicles in Australia with a huge collection on display at the National Motor Museum. We will get our very own guided tour of the museum.</p>  <p>OUTCOME: 1, 2, 5</p>	<p>Arrive By: 9:30am</p> <p>Be sure to put your active shoes on ready for an exciting session of soccer and netball run by CUBE Sports.</p>  <p>OUTCOME: 1,3, 5</p>	<p>NAIDOC week is held each year in July and today we will celebrate the history and culture of the Aboriginal and Torres Strait Islander peoples.</p> <p>Children will participate in a range of activities throughout the day to learn about their culture.</p>  <p>OUTCOME: 1, 2, 5</p>

HELVETT VACATION CARE - JULY 2021

MONDAY 12 th July CRAZY HAIR AND DRESS UPS	TUESDAY 13 th July AMAZING ANIME	WEDNESDAY 14 th July EXCURSION Gawler Cinemas	THURSDAY 15 th July ELECTRONICS GALORE	FRIDAY 16 th July EXCURSION Base Camp Port Adelaide
 <p>Show us your wild side with your craziest hair style and dress up in your favourite costume. There will be a variety of crazy games, crafts and activities throughout the day including styling your hair or creating masks/hats to complete your costume. There will be a prize for the best dressed for the day.</p> <p>OUTCOME: 1, 5</p>	<p>Join us for a day of anime fun where we will have a jam-packed day of anime themed craft, comic making, cartoon drawing, games, creations and more! Come dressed as your favourite comic character!</p>  <p>OUTCOME: 1, 5</p>	<p>Arrive By: 10:30am Return: 3:30pm</p> <p>Today the children will be heading to Gawler Cinemas so they can spend the afternoon relaxing in comfort. Make sure to pack lots of yummy snacks to enjoy while you are there!</p> <p>*Movie will be announced closer to the date*</p>  <p>OUTCOME: 1, 5</p>	<p>Today the children can bring along their favourite piece of technology...maybe their iPod, remote control cars, DS etc. They can share with friends or even set up competitions. There will also be plenty of OSHC challenges and activities throughout the day. Please note we do not take any responsibility for lost, broken or stolen devices</p>  <p>OUTCOME: 1, 4, 5</p>	<p>Arrive By: 10:30am Return: 3:30pm</p> <p>Today the children can become Ninja's at Base Camp, Port Adelaide. During the two-hour session they will get to experience the vertical rope climb, running up the travelator and much more!</p>  <p>OUTCOME: 1, 3, 5</p>